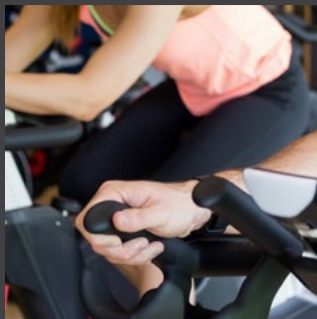
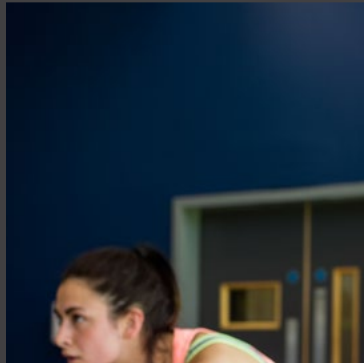


## PG Dip/MSc Health Economics Practice

CKC07



The Postgraduate Diploma in Health Economics Practice is a practice-oriented programme, designed to give students an excellent grounding in the use of economic decision making in the health sector.

Economic decision-making is becoming increasingly important in the health area, with scarce resources being available for ever-increasing needs.

This course provides students with transferrable skills that can be used in a healthcare, business or policy environment.

The programme recognises that healthcare is as much a business as a policy area, and this is reflected in modules on health care markets and health care innovations.

The MSc Health Economics Practice is available as a follow-on qualification, subject to achieving a required minimum standard in the Postgraduate Diploma.



## **UNIQUE ASPECTS**

This course is a practice-oriented course, delivered online, designed to prepare students to apply economics in the healthcare sector.

It also provides transferrable skills, which help to develop the student in a personal, professional and intellectual capacity.

Graduates of the programme have gone on to work in healthcare providers and insurers as well as health policy research positions.

Industry practitioners have been attracted to the course from both private and public sectors, including healthcare providers (both practitioners and administrative functions) and pharmaceutical companies.

## **CAREER INFORMATION**

In addition to orientating and preparing graduates for employment as decision makers in the health sector (including clinicians in management) the programme provides a platform for further education and training through postgraduate or professional programmes in health economics disciplines.

## LEARNING OUTCOMES

On successful completion of this programme, students should be able to:

- Communicate and work effectively to a high professional standard
- Demonstrate advanced analytical and problem solving skills associated with effective practice
- Engage in advanced application of frameworks and techniques in organisational settings
- Apply economic decision-making to health-related issues
- Demonstrate personal and professional development

## PRACTICALITIES & ASSESSMENT

### Practicalities

The course will be delivered predominately online, facilitating self-directed learning.

Field trips, guest lectures and live cases may be organised for times that suit both full-time and part-time students.

### Assessment

The taught modules are assessed entirely via continuous assessment, including a combination of written assignments, online discussions, reflective logs, and presentations.

BRIGHT

MOVERS

## WHAT OUR STUDENTS & GRADUATES SAY ABOUT US...

"...The subjects taught are all very relevant to my current work with lots of group discussions on topical health related issues. This course has been everything and more than I hoped; engaging, pertinent, inspiring and will provide me with the skill set needed to advance my career."

### MARION O'SHEA

Abbvie

"...Each of the modules incorporated both written and oral assessments; these techniques allowed me to further develop my transferable skills. ..."

### KAREN CASSIDY

Previously a Costing Consultant,  
Power Health Solutions

Programme Code: **CKC07**  
Duration: **1 year (Full-time),  
2 years (Part-time)**  
Teaching Mode: **Online**  
Qualification: **PG Dip**  
NFQ Level: **Level 9**



## ENTRY REQUIREMENTS 2018

### Irish/EU Students and International Students

#### Applicants must have:

A degree in business and / or economics OR a degree with at least a 2H2 (GPA 3.00 out of 4.00) grade in a health related discipline OR for those with degrees or equivalent outside the above categories, applicants should have a minimum of 4 years' experience as health sector practitioners or professionals in which case they may be accepted on the basis of recognition of prior experiential learning.

#### English Language Requirement:

Applicants from non-native English-speaking countries will be required to undertake a recognised English language test.

Please see accepted tests and minimum requirements below.

#### IELTS: 6.5

With no individual section lower than 5.5

#### TOEFL: 90

With minimum scores as follows:

- Listening: 17      - Reading: 18
- Speaking: 20    - Writing: 17

**Cambridge Proficiency Exam:** Grade C

**Cambridge Advanced Exam:** Grade B

**Pearson PTE:** Minimum Score of 63

With no section score below 59

### APPLICATION PROCESS

Application for this programme is online at the Postgraduate Application Centre

[www.pac.ie/ucc](http://www.pac.ie/ucc) (PAC Code: CKC07)

For more information on the Programme go to:

[www.cubsucc.com/programmes/postgraduate/pg-dip-health-economics-practice--online/](http://www.cubsucc.com/programmes/postgraduate/pg-dip-health-economics-practice--online/)

### PROGRAMME DIRECTORS

**Dr. Ann Kirby**

T +353 (0)21 490 3679

E [a.kirby@ucc.ie](mailto:a.kirby@ucc.ie)

**Dr. Brian Turner**

T +353 (0)21 490 2974

E [b.turner@ucc.ie](mailto:b.turner@ucc.ie)

### CORK UNIVERSITY BUSINESS SCHOOL

University College Cork, Ireland

T +353 (0)21 490 2136

T +353 (0)21 490 3252/3

E [business-school@ucc.ie](mailto:business-school@ucc.ie)

[cubsucc.com](http://cubsucc.com)