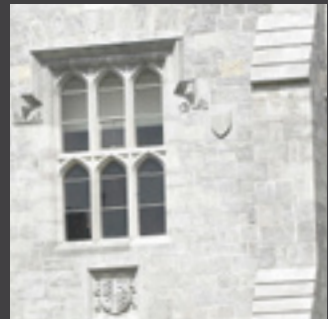
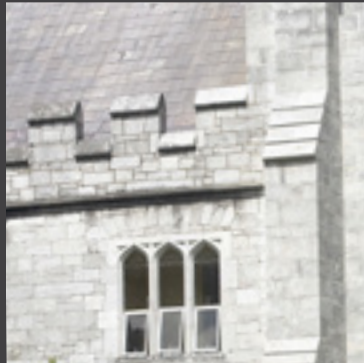


MSc Co-operative and Social Enterprise

CKL42 / CKL10



The MSc Co-operative and Social Enterprise programme is designed for students interested in pursuing or developing a professional or voluntary career in the co-operative and / or social enterprise field.

This is a part-time programme offered through distance learning and can be taken over 1 or 2 calendar years.

It provides students with the knowledge and skills required to participate meaningfully and effectively at leadership level in the decision-making, management and entrepreneurial processes of co-operative and social enterprises.

Students of the MSc Co-operative and Social Enterprise programme will develop the capacity to respond creatively to the needs and problems of the wider community and society.



PROGRAMME DESCRIPTION

The main aims of the programme are:

- To equip students for management careers and/or voluntary service at senior level in a wide range of co-operative and social enterprises
- To prepare students with the knowledge and skills needed to participate meaningfully and effectively at leadership level in the decision-making, management and entrepreneurial processes of co-operative and social enterprises
- To develop student capacity to respond creatively to the needs and problems of the wider community and society, if students are either a voluntary or a salaried practitioner in a co-operative and social enterprise
- To provide students with access to postgraduate and personal development opportunities whilst allowing them to combine family responsibilities and employment

UNIQUE ASPECTS

- Graded by continuous assessment with no written end-of-year examinations

“OFFERS FLEXIBILITY THROUGH DISTANCE LEARNING AND CAN BE TAKEN OVER 1 OR 2 CALENDAR YEARS”

CAREER INFORMATION

This course is designed for those who are interested in pursuing or developing a professional or voluntary career in the co-operative or social enterprise field.

Whether in a voluntary or a salaried practitioner, this course will develop your capacity to respond creatively to the needs and problems of the wider community and society.

LEARNING OUTCOMES

On successful completion of this programme, students should be able to:

- Communicate and work effectively to a high professional standard
- Demonstrate advanced analytical and problem solving skills associated with effective practice
- Engage in advanced application of frameworks and techniques in organisational settings
- Reflect on self-practice
- Propose and conduct empirical research for organisational and academic audiences

PRACTICALITIES & ASSESSMENT

Practicalities

The MSc is a taught master's course, with a research-based dissertation.

Each module / course is delivered using a combination of text-based modules, academic text books, academic readings, web-based discussion and on-line lectures.

Assessment

Students will be assessed by way of continuous assessment, e.g. essays, group work, virtual contributions, etc.

This means that there are no end-of-year written examinations for this course.

Programme Code: **CKL42 (Full-Time),
CKL10 (Part-Time)**
Duration: **1 year (Full-Time),
2 years (Part-Time)**
Teaching Mode: **Online**
Qualification: **MSc**
NFQ Level: **Level 9**





ENTRY REQUIREMENTS 2020

Irish/EU Students and International Students

To apply for this programme you must:

- Be at least 23 at time of enrolment
- Be able to access and use the Internet
- Possess two years' experience in a voluntary or professional capacity in a co-operative or social enterprise, and either
- Hold at least a 2H2 primary degree or an equivalent academic qualification **OR**
- Have at least five years' extensive practical, professional or scholarly experience in the co-operative and social enterprise field as approved by the Cork University Business School, have sat the MSc (Co-operative and Social enterprise) Qualifying Examination and attained at least a Second Class Honours Grade II therein, and present for interview (if required) by the Department of Food Business and Development

English Language Requirement:

Applicants from non-native English-speaking countries will be required to undertake a recognised English language test.

Please see accepted tests and minimum requirements below.

IELTS: 6.5

With no individual section lower than 5.5

TOEFL: 90

With minimum scores as follows:

- Listening: 17 - Reading: 18
- Speaking: 20 - Writing: 17

Cambridge Proficiency Exam: Grade C

Cambridge Advanced Exam: Grade B

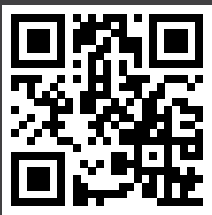
Pearson PTE: Minimum Score of 63

With no section score below 59

APPLICATION PROCESS

Application for this programme is online at the Postgraduate Application Centre www.pac.ie/ucc (PAC Code: CKL42 full time or CKL10 part time)

For more information on the Programme:



PROGRAMME DIRECTOR

Dr Noreen Byrne
T +353 (0)21 490 3356
E n.byrne@ucc.ie

CORK UNIVERSITY BUSINESS SCHOOL

University College Cork, Ireland
T +353 (0)21 490 2136
T +353 (0)21 490 3252/3
E business-school@ucc.ie
cubsucc.com